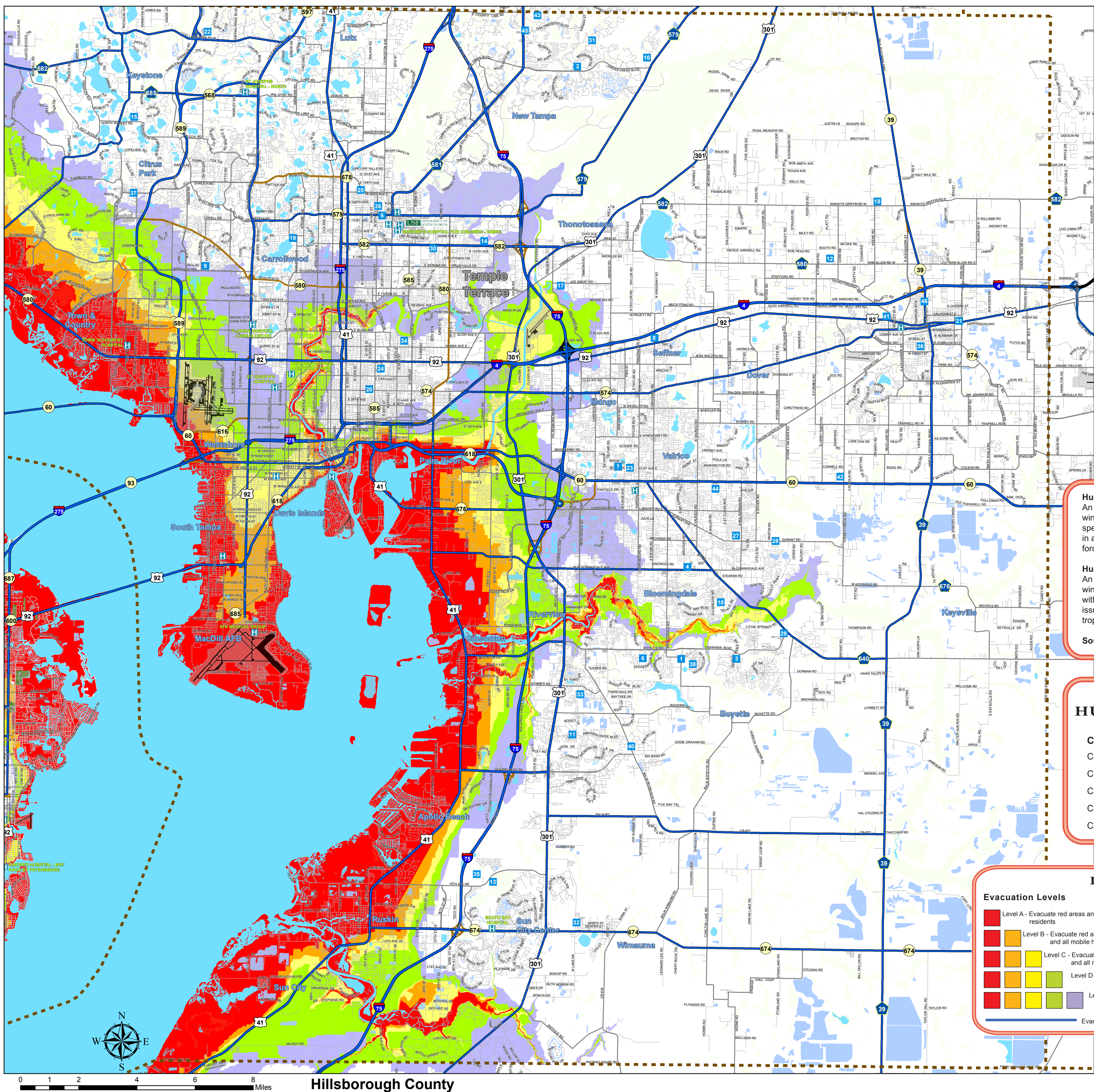


HILLSBOROUGH COUNTY EVACUATION ZONES & SHELTERS



Your evacuation zone may have changed
KNOW YOUR ZONE A B C D E



Hurricane Watch:
 An announcement that hurricane conditions (sustained winds of 74 mph or higher) are possible within the specified area. The hurricane watch is issued 48 hours in advance of the anticipated onset of tropical-storm-force winds.

Hurricane Warning:
 An announcement that hurricane conditions (sustained winds of 74 mph or higher) are expected somewhere within the specified area. The hurricane warning is issued 36 hours in advance of the anticipated onset of tropical-storm-force winds.

Source: <http://www.nhc.noaa.gov/aboutgloss.shtml#h>

SAFFIR-SIMPSON HURRICANE WIND SCALE

CATEGORY	WIND SPEED (MPH)
Category 1	74 to 95
Category 2	96 to 110
Category 3	111 to 129
Category 4	130 to 156
Category 5	157 and over

LEGEND

Evacuation Levels	Potential Storm Tide Heights (FT)
Level A - Evacuate red areas and all mobile home/RV residents	To 11'
Level B - Evacuate red and orange areas and all mobile home/RV residents	To 17'
Level C - Evacuate red, orange and yellow areas and all mobile home/RV residents	To 22'
Level D - Evacuate red, orange, yellow and green areas and all mobile home/RV residents	To 31'
Level E - Evacuate red, orange, yellow, green and purple areas and all mobile home/RV residents	To 38'

Evacuation Routes

SHELTER INFORMATION — Refer to Map Above

NO.	SHELTER NAME	ADDRESS
1	Barrington Middle School	5925 Village Center Dr., Lithia
2	Benito Middle School	10101 Cross Creek Blvd., Tampa
3	Bevis Elementary School	5720 Osprey Ridge Dr., Lithia
4	Bloomingdale High School	1700 E. Bloomingdale Ave., Valrico
5	Bowers-Whitley Career Center	13609 N. 22nd St., Tampa
6	Boyette Springs Elementary School	10141 Sedgebrook Dr., Riverview
7	Brandon High School	1101 Victoria St., Brandon
8	Burnett Middle School	1010 N. Kingsway Rd., Seffner
9	Cannella Elementary School	10707 Nixon Rd., Tampa
10	Cimino Elementary School	4329 Culbreath Rd., Valrico
11	Collins Elementary School	12424 Summerfield Blvd., Riverview
12	Cork Elementary School	3501 N. Cork Rd., Plant City
13	Cypress Creek Elementary	4040 19th Ave. NE, Ruskin
14	Greco Middle School	6925 E. Fowler Ave., Temple Terrace
15	Hammond Elementary School	8008 N. Moblely Rd., Odessa
16	Heritage Elementary School	18201 E. Meadow Dr., Tampa
17	Jennings Elementary School	9325 Governors Run Dr., Seffner
18	Knights Elementary School	4815 N. Keene Rd., Plant City
19	Lake Magdalene Elementary School	2002 Pine Lake Dr., Tampa
20	Lockhart Elementary School	3719 N. 17th St., Tampa
21	Marshall Middle School	18 S. Maryland Ave., Plant City
22	McKittrick Elementary School	5503 Lutz Lake Fern Rd., Lutz
23	McLane Middle School	306 N. Knights Ave., Brandon
24	Middleton High School	4801 N. 22nd St., Tampa
25	Mort Elementary School	1806 E. Bearss Ave., Tampa
26	Muller Elementary School	13615 N. 22nd St., Tampa
27	Mulrennan Middle School	4215 Durant Rd., Valrico
28	Nelson Elementary School	5413 Durant Rd., Dover
29	Newsome High School	16550 Fish Hawk Blvd., Lithia
30	Pizzo Elementary School	11701 Bull Run Rd., Tampa
31	Pride Elementary School	18271 Kinnan St., Tampa
32	Reddick Elementary School	325 West Lake Dr., Wimauma
33	Sessums Elementary School	11525 Ramble Creek Dr., Riverview
34	Sheehy Elementary School	6402 N. 40th St., Tampa
35	Shields Middle School	15732 Beth Shields Way, Ruskin
36	Simmons Career Center	1202 W. Grant St., Plant City
37	Smith Middle School	14303 Citrus Pointe Dr., Tampa
38	Stowers Elementary School	13915 Barrington Stowers Dr., Lithia
40	Summerfield Elementary School	11990 Big Bend Rd., Riverview
41	Tomlin Middle School	501 N. Woodrow Wilson St., Plant City
42	Turkey Creek Middle School	5005 S. Turkey Creek Rd., Plant City
43	Turner/Bartels Middle School	9020 Imperial Oak Blvd., Tampa
44	Valrico Elementary School	609 S. Miller Rd., Valrico
45	Wharton High School	20150 Bruce B. Downs Blvd., Tampa
46	Wilson Elementary School	702 English St., Plant City

SHELTER ICONS LEGEND

- Public Shelters
- Shelters with ADA-accessible restrooms
- Shelters with this designation are county staffed Pet Friendly Shelters. Please bring cage, food, water, medications and proof of vaccinations.

Shelters are not listed in the order they are opened and shelter openings will vary with each emergency depending on the type and intensity of the disaster. Stay tuned to local media for a listing of shelters, to include any pet-friendly shelters, which will be opened for an event. **Do not go to a shelter until local officials announce that the shelter is open.**

HILLSBOROUGH COUNTY SHELTER INFORMATION

In the event of a community emergency, Hillsborough County has emergency shelters for residents and visitors available as a last resort. Become familiar with the shelter information provided and make sure everyone in your household knows the following shelter facts:

- Shelters are opened on an "as-needed" basis.
- Shelter openings may vary with each emergency.
- Never go to a shelter unless local officials have announced it is open.
- Current shelter information is available from local radio and television stations, and the Hillsborough County Customer Service Call Center (formerly known as InfoLine) at (813) 272-5900. More information is available on the county website, HCFGLGov.net/STAYSAFE

PET FRIENDLY SHELTERS

Hillsborough County offers eight (8) pet friendly shelters, indicated on the shelter list of this guide. Sheltering your pet:

- Provide proof of current rabies vaccination and license for dogs and cats
- Pet must be on a leash or in a carrier
- Provide a crate large enough for your pet to stand up and turn around. Cats need a crate large enough to contain litter and food/water
- Bring all pet supplies to include: crate, food, water, litter, treats, cleaning supplies, medicines, etc.
- You are responsible for the care of your pet while in the shelter
- Cohabitation of pets and owners is not permitted

If you are unable to meet these requirements, please make other arrangements to shelter your pet.

SPECIAL NEEDS

Hillsborough County provides a shelter program for those residents requiring special medical related care. Special needs shelters will be available for persons requiring more skilled medical care than available in a public shelter but not requiring an acute care facility such as a hospital. If this type of extended care is needed, contact the Hillsborough County Customer Service Call Center (formerly known as InfoLine) at 813-307-8063 to be considered for registration into this program.

IMPORTANT CONTACT INFORMATION

PET RESOURCES	813-744-5660
DEVELOPMENT SERVICES	813-272-5600
BUSINESS DISASTER HOTLINE	813-301-7458
EMERGENCY MANAGEMENT	813-272-5900
HIGHWAY PATROL	813-558-1800
HILLSBOROUGH COUNTY CUSTOMER SERVICE CALL CENTER (formerly known as InfoLine)	813-272-5900
TTY	7-1-1
SOLID WASTE	813-272-5680
SHERIFF	813-247-8000
SPECIAL NEEDS SHELTER REGISTRATION	813-307-8063
TECO	813-223-0800
TO REPORT POWER OUTAGES	877-588-1010
TRANSPORTATION INFORMATION	813-272-5900
AMERICAN RED CROSS	813-348-4820
CATHOLIC CHARITIES	813-631-4370
SALVATION ARMY	813-226-0055
CRISIS CENTER OF TAMPA BAY	2-1-1

HCFGLGov.net/STAYSAFE

DO NOT CALL 9-1-1 FOR HURRICANE INFORMATION

USING YOUR COUNTY MAP

- Locate where you live and work on the map.
- Determine whether you are in an evacuation area, and if so, what level (color).
- If you are in an evacuation area, or live in a mobile home/RV, decide where you will go if ordered to evacuate. Your choices include:
 - Home of a relative or friend outside the evacuation zone
 - Hotel/motel outside the evacuation zone (make arrangements early)
 - Go to a public shelter
 - As a last resort leave the area entirely
- If you must go to a public shelter, use your county map to decide which one is convenient. Make sure you verify the shelter is open before you go.

HURRICANE THREAT

The colored areas on the map are vulnerable to storm surge. Storm surge is produced by water being pushed towards the shore by the force of the winds moving around the storm.

- Storm surge creates a path of destruction, wiping out structures as it rapidly surges inland and then recedes. This is a life threatening situation for anyone who ignores mandatory evacuation orders and stays in vulnerable areas.
- Hurricanes are categorized on a scale of 1 to 5, depending on wind strength and destructive power. The evacuation zones are color coded to designate the level of storm surge likely to occur.
- Each colored area corresponds to an evacuation zone and each zone is given a letter designation, A-E. Evacuations will be ordered by zone based upon the projected storm surge.
- If you live in an area ordered to evacuate, gather your family/pets and emergency supplies, secure your home and leave immediately. Failure to obey a mandatory evacuation order is a violation of state and local laws.

Note: All persons living in mobile homes/RVs must evacuate for all mandatory evacuation orders, regardless of where you are located in the county.

NOAA WEATHER RADIO

A NOAA weather radio can provide you with valuable hurricane information as well as vital warning information for tornadoes, severe thunderstorms and other dangerous weather. It also broadcasts warning and post-event information for all types of hazards such as chemical releases and significant matters of public safety.

Hillsborough County Frequency 162.550 MHz, SAME Code 012057

FLOOD PREVENTION ASSISTANCE

For unincorporated County residents, staff from the Engineering and Environmental Services, Hazard Mitigation Program may make a site visit, upon request, to assist property owners with flooding and stormwater drainage information to address site-specific flooding concerns. This service is provided at no charge. For additional information on flooding, flood insurance, flood zones, retrofitting, or elevation certificates, you may contact the Hazard Mitigation Program office at 813-307-4541. Elevation certificates on file for areas within unincorporated Hillsborough County may be obtained in writing: Hazard Mitigation Program, Engineering & Environmental Services, Public Works Department, County Center, P.O. Box 1110, 22nd Floor, Tampa, Florida 33601. Residents of municipalities should contact their respective municipal offices regarding their services in this area.

WHAT'S A PDRP?

The purpose of the Post Disaster Redevelopment Plan (PDRP) is to provide the County and cities with county-wide guidance for local decision-making and actions during the difficult recovery following a major disaster. The PDRP details actions that need to be taken to speed the recovery process and make our community more disaster resilient in the future. It also identifies actions we need to take now before a disaster strikes in order to make sure that happens.

To find out more about the PDRP and how you can be involved, go to HCFGLGov.net and enter "PDRP" in the search box.

HILLSBOROUGH COUNTY TRANSPORTATION INFORMATION

During a hurricane evacuation, area buses run evacuation routes throughout the county to assist those who need transportation to shelters. Greater Tampa and Town n' Country: Hillsborough Area Regional Transit Authority (HART) runs special evacuation routes in these areas. For route maps and instructions, visit gohart.org or call the HARTinfo Line at 813-254-4278.

South and East Hillsborough County: Hillsborough County public school buses run evacuation routes in these areas. Route information is available at HCFGLGov.net/STAYSAFE or via the Hillsborough County Customer Service Call Center (formerly known as InfoLine) at 813-272-5900.